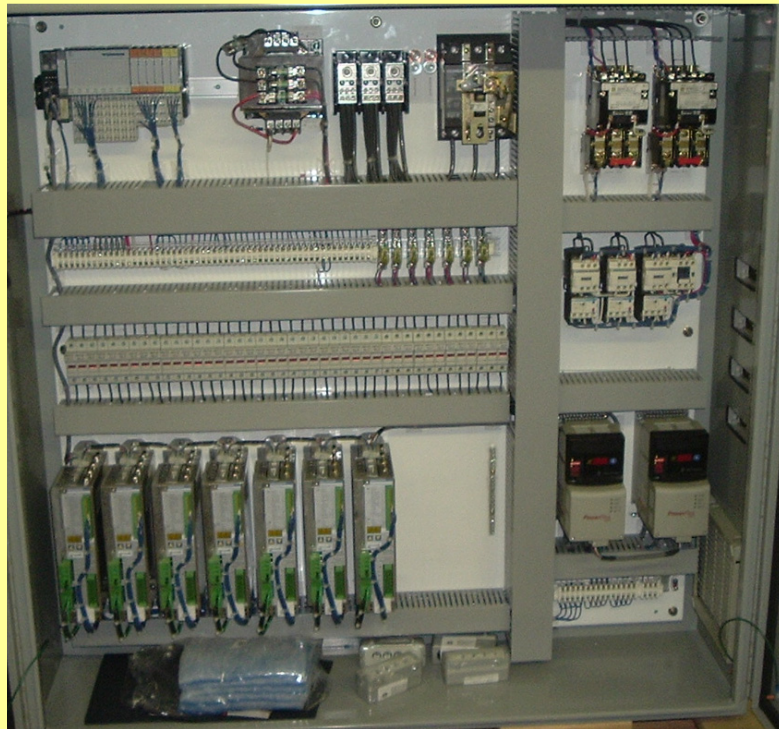


West Plains Electric

Controls and Automation, Inc.

Motion Control and High Speed Positioning



- Single Axis Movement and Positioning to Multiple Axis Coordinated Movements
- Closed Loop Servo Systems for Consistent, Repeatable Positioning Within .002" - .004"
- Closed Loop AC Motor and Hydraulic Systems Capable of Accuracy Within .005" - .007"

Easy Integration Into
Existing Systems!

